

PARISH MAGAZINE



St. Mary's, Herriard



All Saints', Turworth



St. Mary's, Upton Grey



St. Lawrence, Walscot

April
2019

USEFUL CONTACT DETAILS

| | | |
|--|-------------------|---|
| Benefice Rector | Simon Butler | 01256 861706 nhdbrector@gmail.com |
| Parishes' email address | | nhdboffice@gmail.com |
| Licensed Lay Ministers | Jill Lestrille | 01256 862131 |
| | Alan Hoar | 01256 395077 |
| Church Wardens | | |
| Herriard/Winslade | John Jervoise | 01256 381723 |
| | Fiona Ives | 07867 973266 |
| Tunworth | Mark Ruffell | 01256 346148 |
| | Edwina Spicer | 01256 471271 |
| Upton Grey | Sarah Barnes | 01256 861164 |
| | Geoffrey Yeowart | 01256 861218 |
| Weston Patrick | Mem Fitzpatrick | 01256 862359 |
| Borough Councillor | Mark Ruffell | 01256 346148 cllr.m.ruffell@basingstoke.gov.uk |
| County Councillor | Anna McNair Scott | 01256 476422 |
| Member of Parliament | Ranil Jayawardena | 0207 219 3000 |
| (Phone for your MP Surgery Appointments) | | ranil.jayawardena.mp@parliament.uk |
| Parish Chairmen | | |
| Herriard | Gareth Davies | Chair@herriard-pc.gov.uk |
| Tunworth | David O'Donnell | 07831 631455 |
| Upton Grey | Paul Gray | 01256 862440 |
| Weston Patrick | Ian Turner | 01256 862162 |
| Winslade | John Raymond | 01256 381203 |
| PC Andy Reid | Main local | 01256 389050 |
| | Mobile | 07768 776844 |
| Neighbourhood Watch | | |
| Herriard | Rebecca Wills | herriardnhw@btinternet.com |
| Upton Grey | George Hillier | georgeandray@uptongrey.uk |
| Powntley Copse | Jill Burry | jill.burry@btinternet.com |
| Tunworth | Sarah Whitcombe | swhitcombe@hotmail.co.uk |
| Weston Patrick/Corbett | David Don | davidtwdon@gmail.com |
| Magazine | | |
| Editors | Tess Chevallier | 01256 862636 |
| | David Shearer | 01256 320538 |
| | Sheila Stranks | 01256 862465 |
| | Ian Lansley-Neale | 01256 381380 |
| All editors' email: | | uptongreymagazine@gmail.com |
| KidsZone | Helen Chatfield | 07540 140228 |
| Treasurer | William Maughan | 01256 861371 |
| Advertising & Production | Susie Vereker | 01256 862365 |
| | | uptongreymagazine@gmail.com |
| Distribution | Jane Hanbury | 01256 862681 |

BENEFICE MAGAZINE –April 2019
Edition for the Parishes of Herriard with Winslade, Tunworth,
Upton Grey and Weston Patrick

Editorial for April 2019

In about 1630 Rembrandt painted a picture called *The Entombment*. It is a striking picture of the entombment of Jesus that captures the hopelessness, grief and desolation of what many thought would be the end of Jesus of Nazareth.

In the picture Rembrandt manages something extraordinary as he uses golden flashes to portray dazzling bursts of light emanating from Jesus body. The only light in the picture comes from Christ, Rembrandt shows no other source.

Looking at the picture the way in which the light appears draws our minds back to paintings of the nativity scene. As the infant Jesus shone in the crib, so here, the adult Jesus shines in the tomb.

The painting attempts to depict the scene on Easter Saturday and in it we see the darkness of Good Friday and the joy of Easter Day. Darkness and light. Despair and hope. Rembrandt seems to have captured perfectly the opening lines of John's Gospel "*the light shines in the darkness, and the darkness has not overcome it*".

But a painting, a little like the Gospels themselves, can only go so far. Nothing, no account or picture could ever capture the full magnitude of the events surrounding Easter. But nonetheless we're given a window through which to look and see that in Jesus, in the cold tomb, life overcame death, the darkness was chased away by the glorious light of God, and new life can be found.

The Easter story is in one sense really that simple. That having died for the Sin of the world, Christ is raised in Victory, conquering sin and death, and proclaiming the offer of forgiveness and new life to all who will trust in him.

The first Easter marked a new beginning for Jesus' early followers. In response to the bewildering events they found themselves looking back at events in the distant past with fresh eyes that now made sense of the

present. They looked to the future too with a renewed sense of hope and faith.

I wonder if this Easter might be for us a similar sort of turning point? A time when we might see afresh or even for the first time, the wonder of Jesus resurrection and allow it to heal our past and transform our future.

Over the Easter weekend all of our Churches will be re-telling the Easter story. Inviting us once again, not just to look but to see the risen Christ. And then, having seen, we are invited to embrace the new life that Jesus offers and encounter the living Christ in the here and now.

“The light shines in the darkness, and the darkness has not overcome it”

Rev'd Simon Butler

CHURCH NEWS

Adult Choir

Our next practice is on **Tuesday 9th April at 8pm**, and we will be singing at our Palm Sunday Family Service **10am on Sunday 14th April**. We will also sing at our Easter Communion service on **Sunday 21st April** – any additional practices will be advised by email.

The next **10.00am Thursday** Holy Communion service in **Herriard** will be on **18th April**. All are welcome to this informal, friendly and relaxed service, which is followed by refreshments.

Holy week and Easter 2018

Palm Sunday is on **14th April** and we have services in all our churches with a Palm Sunday theme. In Upton Grey, we will start at the pond as usual, just before the service time 9.55am and then process to church for a really fun Family Service with refreshments served afterwards.

Maundy Thursday - 18th April

There will be a Benefice Holy Communion **7.30pm** at **All Saints Odiham**

Good Friday 19th April

| | |
|---------|--|
| 8.00am | Meditation service at Tunworth |
| 9.30am | Good Friday workshop at St Mary's Upton Grey |
| 10.00am | Good Friday Meditation service at Herriard |
| 11.00am | Good Friday service at Upton Grey |

Easter day 21st April

| | |
|---------|----------------------------------|
| 9.00am | Parish Communion at Tunworth |
| 9.45am | Family Communion at Herriard |
| 10.00am | Family Communion at Upton Grey |
| 11:15am | Holy Communion at Weston Patrick |

The Annual Parochial Church Meeting (APCM) season is with us, providing an opportunity for parishioners to ask questions and give ideas, as well as electing churchwardens and PCC members. All are welcome. The dates for these are:

Sunday 7th April at Upton Grey at 11am, after the service

Tuesday 16th April 7.30pm at Blackdown Farm, Tunworth

Monday 29th April 7.45pm at Royal British Legion, Herriard.

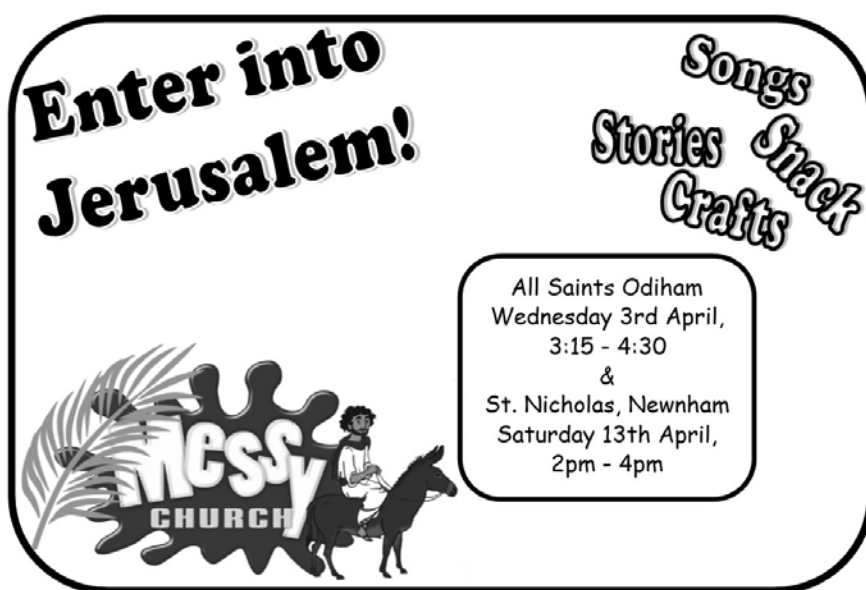
*Don't forget we have a **website**: www.uptongreychurch.co.uk. It carries the monthly Parish Magazine including service times and diary dates, plus details of local groups and organisations and other information relating to the four churches.*



KidsZone

Sparks

Sparks! takes a break in April – do join us for the **Palm Sunday service** on **14th April** instead. We will meet again on **Sunday 12th May**.



Palm Sunday – Sunday 14th April

Once again, we are meeting at the Upton Grey pond at 9.55am to start our Palm Sunday service. We will then process to church. All are most welcome to join us for this really fun and family-friendly service. Refreshments will be served afterwards.

Good Friday Children's workshop 9.30am at St Mary's church on Friday 19th April, followed by the **Good Friday Family Service at 11.00am at Upton Grey**. **Hot cross buns** will be served at the end of our workshop. **All welcome.**

Tea-Time Service – Sunday 28th April, 4.30pm

We will be holding our tea-time service on the 4th Sunday of April so why not enjoy a relaxing morning and then join us at 4.30pm at St Mary's Upton Grey. This service is open to families across all our villages, and starts with a simple tea for our children, followed by a contemporary all-age service.

Not Long until Easter!

By the time you read this, we'll be more than half way through Lent and you'll almost be able to taste the Easter eggs you're hoping to get on Easter Sunday! Did you decide to give something up this year – or even better, take something on? Changing habits is really hard, isn't it, so I hope you've been successful!

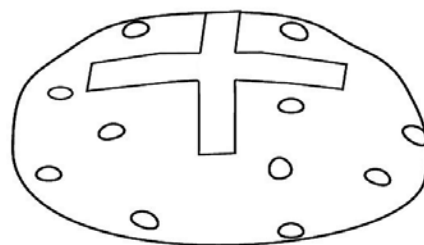
One of the best bits about Easter is all the traditional food we can enjoy – Easter eggs, hot cross buns – but have you ever heard of Simnel cake? A traditional fruit cake covered in marzipan with 11 small marzipan balls on top. These balls represent Jesus' disciples. "Hang on," I hear you say, "Jesus had 12 disciples!" True, but traditionally we leave off the one which represents Judas Iscariot. Do you remember why?

52 MAB ST: this is a great way to remember the names of Jesus' disciples! Come along to Messy Church this month, and I'll teach you the song!

5 The 5 Js: John, James, James son of Apheus, Judas, Judas Iscariot
 2 The 2 Ps: Peter and Philip
 M for Matthew
 A for Andrew
 B for Bartholomew
 S for Simon
 T for Thomas

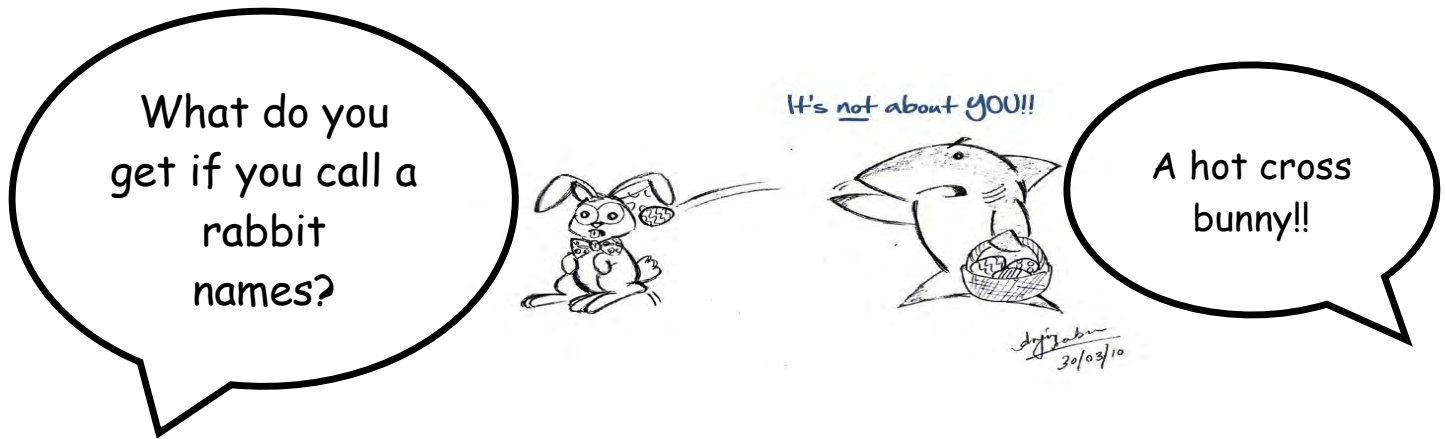
HOT CROSS BUN RECIPE using a bread machine – super easy!

- 450g strong plain flour
- 1.5 tsp fast action dried yeast
- 200ml milk
- ½ tsp salt
- 1 tsp mixed spice (level)
- 75g caster sugar
- 50g butter, melted
- 1 medium egg
- 30g currants (more or less to taste)
- 30g mixed peel (or extra dried fruit), chopped



Method:

- Add the ingredients in the order according to your manual (either wet or dry ingredients first)
- Use the dough setting and add the dried fruit at the raisin beep
- Divide the dough into 12 pieces and shape into buns
- Set the buns well apart on the prepared trays
- Leave them in a warm place until doubled in size
- Make two cuts on the top of each bun to form a cross
- Bake just above the centre of the oven (200 / Gas Mark 6) for 15-20 minutes
- Glaze with a mixture of water and icing sugar.
- ENJOY!



NEWS FROM THE VILLAGES

How to Make Sure Your News is included in the Parish Magazine

Your news matters, and we want to include it, but some items people send don't get to us in time which is always a shame.

The only email address you need is UptonGreyMagazine@Gmail.com

This is monitored by all the Editors for magazine contributions – so please delete any other address you either have, or your computer remembers, for magazine content.... They no longer work!

Please help us by sending your contributions before the copy date which is 15th month preceding BUT Earlier for the January Magazine.

The Editors

Police Report from PC Andy Reid

I am pleased to report no crime of note within the areas of this magazine, albeit we are still experiencing poaching of deer etc. at regular intervals. We do however, appear to be the centre of attention when it comes to suspicious callers or telephone scams.

On February 26th in the late afternoon a white Mercedes van registration BD06 CVH, containing two eastern European men was seen on private property in Church Lane, Ellisfield looking into a skip looking for scrap metal. On that day I received similar reports that it was seen in Lasham, we suspect it was involved in the theft of scrap metal in Preston Candover some weeks back. I urge anyone who has any scrap metal to keep it out of the way to prevent theft and so that you get what it is worth rather than a thief.

On March 6th 2019 we had a white van belonging to a fish seller also in Ellisfield, a resident called to complain as the man selling was 'pushy' towards them when they said no they were not interested. Obviously with such callers residents need to be wary ask about the hygiene standards, how old the fish is, (this one was from Essex), so how long had the fish been in the van? Is the fish in ice, the van adopted to carry frozen goods or keep the goods cold? There are professional fish sellers who use professional standards and vehicles.

Some residents have managed to avoid the above type people only to have telephone calls made to them, the list is endless but Action Fraud who are the National Fraud Intelligence Bureau which is run by the City of London Police and Hampshire Trading Standards do update residents on the latest scams. One is from a security company stating that crime is rising in your area, this is untrue in fact across my beat area last year it fell. They will encourage you to look for security monitoring etc. Please do not be pushed in to purchasing expensive security equipment by a call pushing the fear of crime. Also as April is upon us we can expect the usual Tax Return scam, the HMRC do not deal initially with email or want money sent, always look at the reply email address usually it will not be from HMRC with a .gov.uk address. If you have concerns do not answer it and give me or trading standards a call.

There is also a box in the shop containing crime prevention leaflets, U/V pens etc., please help yourself. Hopefully I can arrange a crime prevention

evening at the village hall similar to that of the one held last year in Herriard and other places, in the near future and arrange for Hampshire Trading Standards to attend also.

On a personal note may I thank all those who kindly have sent me a congratulations regarding the award I received from the Hampshire High Sherriff after a nomination from the Candovers Parish Council. The award is gratefully appreciated, however, I believe that I have the best policing job in Hampshire but it is my local residents that continue to support me that allow me to provide as dedicated service as I can, especially in the new enlarged area that I cover. Equally we all pay our council tax and should have a decent policing service. Thank you for all your support and to my team of Neighbourhood Watch Co-ordinators who do a fantastic job.

Andrew REID, Local Constable
PC 3746, Tel: 01256 389050 Mob: 07768:776844 email: andrew.reid@hampshire.pnn.police

Your Opportunity to Appear in a BBC TV series **Letter from Emma Browning of Wall to Wall Productions.**

Dear Editors,

I work for a television production company called Wall to Wall Media and we produce a variety of programmes, including *Who Do You Think You Are?* (BBC) and *Long Lost Family* (ITV). We also make BBC2's living history strand *Back in Time*; recent series of this include *Back in Time for Tea* and *Back in Time for School*.

For our new *Back in Time* series, we are looking for a family to immerse themselves in the past world of rural village life. We're filming the series in the region over the school summer holidays 2019 and are looking for a new family to take part and go back in time. We're very keen to get the word out to families in Hampshire, particularly those with memories of, or connections to, the countryside and village life. It would be fantastic to hear from you as to whether this would be possible and please let me know if you have any questions.

Emma Browning
0117 906 4316 emma.browning@walltowall.co.uk
www.walltowall.co.uk

News from Long Sutton C of E Primary School

The importance of good mental health and emotional well-being is now widely recognised in all walks of life, especially for children and young people. As a school, we value high self-esteem and emotional resilience, as these are the foundations which enable children to learn, achieve and build strong relationships throughout their lives.

Last month we launched 'Heartsmart', an approach to building character and emotional resilience in our children. This new approach is the foundation of our PSHE curriculum (Personal, Social, Health & Emotional Development) but it also underpins our whole school ethos and culture. We welcomed Boris the Robot and his friend Pete into school to train staff and to meet children and parents in a special launch assembly. Boris is made from junk materials from the scrapyard but learns that he is still valued, loved and unique, teaching the children to love themselves and love others. The 'Heartsmart High 5' principles are:

- Don't Forget to Let Love In (Love yourself; building self-esteem)
- Too Much Selfie Isn't Healthy (Love others; connecting with others)
- Don't Rub It In, Rub It Out (Forgiveness)
- Fake Is a Mistake (Be true to yourself; courage to be honest and accept our own uniqueness)
- No Way Through Isn't True (There is always hope when life is tough; building resilience and aspiration and persevering when we face challenges)

You can learn more about 'Heartsmart'

at <https://heartsmartprimary.com/what-is-heartsmart/>

The approach aligns well with our core values of Love, Courage & Hope, as well as our school rules of 'Be Kind; Be Respectful; Be the Best You Can Be.' It also fits with our Christian Distinctiveness as a church school; the Heartsmart concept and principles are based upon what the Bible teaches Christians about love in 1 Corinthians 13. In addition, it supports our learning gems of Independence, Perseverance, Managing Distractions and Collaboration, as well as our status as a Trailblazer school, promoting engagement and care for the outdoors through team work and care for the environment. We are very proud of our curriculum and the way in which it is underpinned by these core principles.

If you have children of Primary School age and would like to find out more about us, I would love to show you around our ‘vibrant and exciting’ school (Ofsted March 2018). Please contact the school office to make an appointment.

Hannah Inglis - Headteacher Tel: 01256 862238

UPTON GREY NEWS

www.uptongreychurch.co.uk

www.uptongreyparishcouncil.co.uk

Safari Supper Report for Parish Magazine 2019

A big thank you to all who took part in this year’s Safari Supper. It was a huge success and there was a real buzz in the Village Hall at the end. It re-enforced what a fantastic community we have here in Upton Grey.

76 people took part and together raised a total of £950 for St Mary’s Church.

Special thanks to all those chefs who created the delicious courses; for the wonderful hospitality and generosity of spirit shown to new Safari Supper goers, who were warmly welcomed and assisted in finding where to go. Thank you also to all the ‘faithful’ supporters, who really help make this event easy to run.

We would like to extend our thanks to Jo Adair and Patrick Symington for kindly providing the port for the end of the evening. With the Summer down chocolates and minty tea, I’m sure it helped end the evening on a high. We are already looking forward to next year!

Vivian Raven, Julia Harker

Upton Grey Village Hall 100 club – April Draw

First prize: No. 63 Mr A. Dunkley

Second prize No. 82 Ms J Hanbury

The 100 Club Draw is your village hall’s main fundraiser. Please renew your membership and subscribe to keep this valuable asset in place. Subs are £2.00 per month, £24.00 a year. To join in please contact Caroline James on 862480 or Brian Thrussell on 862819. Many thanks for your support.

Lent Lunches, 2019

The programme concludes on *4th April* with a lunch at Margaret Haynes, Waverley Cottage Tel: 862433. Please telephone Margaret at least a day before the lunch, but you will be most welcome even if you just turn up. Every lunch starts at 12.30pm and finishes by 2.00pm. There is no charge, but please give a generous donation to the Juvenile Diabetes Research Foundation. Any queries or requests for a lift please ring me, Jill, on 862131

Spring Show – Upton Grey Horticultural Society

The show is on Saturday 6th April, so please make sure you come and enjoy yourself. Our adult competitors will have entered in classes for cookery, preserves, photography, artwork, daffodils and other spring flowers, rhubarb, and hens' eggs. For children we have Lego, drawing, colouring, and a collage. There's a small entry fee for adults but FREE for children.

New to the area and wonder what this is all about? We hold a small horticultural show in Upton Grey village hall, Church Street. This is a show for villagers, not professionals, and is judged accordingly. There's even prize money for children and trophies for various classes.

Would you like to volunteer to help with the Show? If you would, then please contact our Secretary. You will be assured of a very warm welcome! For more information please contact our Secretary, June Hunt, on 01256 862719. It's all about YOU!

Plant Stall – Upton Grey Fete 8 June 2019

It is always difficult to get the variety of plants needed to make the plant stall a success each year. We have to start early, so If you have any herbaceous plants/perennials that you intend splitting up or do not want please do not throw away – pop into a plastic bag and drop on my drive, along with any old outdoor hanging baskets that you don't want. (Clock Cottage, Cleves Lane) or give me a call and I will collect (862705) - Debbie Bridle. We are always very grateful for any donations - plants, seedlings, pots/troughs, garden tools or anything garden/plant related. Thankyou.

Attention all Upton Grey golfers

With the new season only a couple of months away it is my pleasure to let you know about this year's golf day which will take place on Tuesday 11th June at Tylney Park Golf Club.

Men and women golfers of all ages, shapes and sizes and all abilities are welcome. This includes regular players, occasional players, and 'I haven't played for ages' players. Maybe this is the year to finally decobweb those clubs in the back of your garage!

It will be a very relaxed, sociable day together with a good walk in attractive Hampshire countryside. The cost is £45 per golfer and includes coffee/tea and a bacon roll before we tee off, a two-course lunch, followed by prize giving. Prizes will be awarded for the nearest to the pin, the longest drive, the best team and best individual performances.

We will meet at 8.30am and have the first tee booked from 9.30am. This will be a great opportunity for new golfers who have moved to the village to meet more people. If you'd like to take part or have any questions please email me at williammaughan@me.com or phone me on 07941 326094 or 861371

William Maughan

Tea@3

With the Safari Supper and several Lent Lunches taking place in March we didn't hold a Tea@3. So this month it will be held on Thursday 25th April at Christmas Cottage, Weston Road – we look forward to seeing you.

Barbara 862627, Jill 86213, Viv 862455

Diary date

Upton Grey's Harvest Supper is taking place on Saturday 12th October, so please do put the date in your diary!

After many years, Trevor Hart has retired as our quiz master, and we are therefore looking for someone to take over the running of a light-hearted quiz for the end of our supper. Contact Adele on 862251 if you feel you can help. Many thanks.

Junior Tennis Coaching Weeks

Upton Grey Tennis Court Committee invites children aged 4½ and 15 to an Easter Tennis Week at Upton Grey tennis court from 15th–18th April.

Sessions start from 9.00am and are about 45 minutes long. The coach is Andrew Ridgers, who has been leading the tennis coaching for some

LOCAL DIRECTORY

*(Please take up advertisers' references if necessary.
We must disclaim responsibility)*

ACCOUNTS

B20 LIMITED – Chartered Certified Accountants.
Accounts and Tax Returns preparation and advice.
Payroll and Book-keeping support for local
businesses on or off-site
Call Caroline on 01420 88250 (Alton), mob 07831
696231 email caroline.scull@b20ltd.co.uk

BLACK & WHITE CHARTERED CERTIFIED
ACCOUNTANTS A complete accountancy service
for limited companies, individuals and sole traders.
Accounts, taxation, self-assessment, book-keeping,
VAT, management accounts, payroll and CIS.
2-3 Stable Court, Herriard Park, Herriard, RG25 2PL.
0800 140 4644. www.blackandwhiteaccounting.co.uk
info@blackandwhiteaccounting.co.uk

ART, FRAMING, GIFTS, JEWELLERY WORKSHOP

THE FRAME Odiham. We frame almost anything -
sports medals & shirts, child's art work, keepsakes,
certificates, posters, paintings, needlework & textiles.
We're also a gallery specialising in original pictures
by local artists, catering for all budgets. *Gifts too.*
81 High Street, Odiham. 01256 701082
theframe@btinternet.com
www.theframe-gallery.co.uk

KATHERINE JANE

Gifts for all occasions
Mon-Sat 9.30 am to 5 pm
Fountains Mall, High St, Odiham
01256 703482

JEWELLERY & SILVERSMITHING WORKSHOP

Bench space for experienced makers, and teaching
for beginners & intermediates
Please contact Harriet by text anytime 0780
1233966 or email hkw@roundobjects.co.uk

BUILDERS etc, DECORATORS, JOINERY WINDOW/OUTDOOR CLEANING

ANSCOMBE & SONS
Builders & Contractors, Manor Farm Yard,
Greywell Road, Upton Grey, RG25 2RQ
01256 862 995 anscombebuilders@btconnect.com
www.anscombeandsons.co.uk

continued

Builders, decorators, windows, continued

A CLAY ROOFING offers the following services at
the highest standard: roof repairs, new roofs, reroof,
rubber EPDM roofs, lead work, fascias soffits and
guttering. Please call Adam on 07827011040 for a
free quote or email a.clayroofing@gmail.com
Facebook <http://www.facebook.com/a.clayroofing>

R J COUTTS - General Builder and Plasterer.
Call for a free no obligation quote. No job too small!
Tel: 07786543671
rjcoutts@hotmail.co.uk

GOPHEROWEN SERVICES, External property
maintenance, serving Odiham area for over 10 years.
We value our reputation for reliability and quality.
Window and conservatory cleaning. Internal window
& conservatory cleaning. We also clean gutters and
fascias, patios and driveways. We repair gutters,
patios and sheds. Call 01256 704611
sales@gopherowen.com www.gopherowen.com

PETER LINDGREN

Decorating & General Maintenance
Mature professional, references available
Upton Grey 01256 862230
Mobile 0759 3357 009

CUBITT BUILDERS

Kolkinon House, Up Nately RG27 9PD
01256 766939 / 07721 410148
hugo@cubitt.biz www.cubittbuilders.com

MICK TOTT CONSTRUCTION

Joinery and Building Contractors of Greywell.
7 Down Farm, Alton Road, Odiham RG29 1QX
01256 703500 info@micktottconstruction.co.uk
www.micktottconstruction.co.uk

ODIHAM JOINERY

Specialist bespoke joinery, windows,
doors, staircases, freestanding furniture
7 Down Farm Odiham Hook RG29 1QX
Email info@odihamjoinery.co.uk
01256 703353 www.odihamjoinery.co.uk

OLD & LISTED

Building renovation, repair and maintenance.
Tel. 07884168279
email: itswellsy@hotmail.com

continued

Builders, decorators, continued

ANDY TURNER DECORATORS

01256 861 881

email: andy@decorate.uk.net

WESTPORT GREY LTD

Construction - Management - Development

Bespoke building projects

for the discerning client

Tel: 01256 636 511

www.westportgrey.co.uk

CONSTRUCTION & GROUNDWORK SERVICES

OWNER-DRIVER DIGGER CONTRACTOR

Beere and Sons Ltd, 27 Bramblys Close,

Basingstoke, RG21 8UP

Email: nick@beereandsons.com

www.beereandsons.com/digger

Mobile: 07711 266931

CARER SERVICES

BERYL CARE SERVICES. Do you or your loved one require support to continue living independently at home? Are you caring for a loved one and would like a break for a few days or more? Do you temporarily need a night carer to catch up on sleep? As a carer, would you like emergency support? Our staff are highly trained to provide exceptional person-centred care. Contact 01264 394 616/07930519320

CARPET CLEANING

HART CARPET CARE, Est. 1975. Professional carpet and upholstery care including: cleaning, stain protection & anti allergen treatments, and flood and water damage recovery. Contact Tim Marshall on T. 01252 849920 M. 07803168693
tim@hartcarpetcare.co.uk, www.hartcarpetcare.co.uk

CATERING, CAKES, EVENT EQUIPMENT HIRE

SCRUMPTIOUS BAKES BY EMMA. Beautiful, bespoke bakes. The finest ingredients. Celebration Cakes, Cupcakes, Cupcake Bouquets, Doughnuts, Macarons, Personalised Biscuits, Wedding Cakes and Favours. Vegan and free-from available. Collection and hand-delivery. 077155 60074, scrumptiousbakesbyemma@gmail.com, www.scrumptiousbakesbyemma.co.uk (Herriard)

JANE STOCKDALE For all catering requirements including dinners, lunches, buffets, cocktail parties, tea parties, Christening parties, After Service gatherings. Individual dishes, cooking for the freezer. Specializing in cakes & canapés. Please call 01252 723161 or 0777 5696918. email: janestockdale01@hotmail.co.uk

PARTY LINE

Catering equipment hire. China glasses, linen, cake stands, tables, chairs, BBQ. See website for prices. 01256 469255 www.partyline.co

CHIMNEY SWEEPING

BRUSHSTROKES Chimney Sweep. Wood burning stove service and repair specialist. Chimney problems solved. Pots, cowls and bird guards fitted. NACS and HETAS reg. Keith Mitchell, Brush Strokes, The Hunny Tree, Seale Lane, Seale, GU10 1 LE. 01252 783456 www.masterchimneysweep.co.uk

WILKINS CHIMNEY SWEEP - Established 1895. Traditional Brush & Vacuum Service, Nests Removed, Cages, Caps & Cowls fitted, Sweeping Certificates issued. Professional clean service, Fully Insured and Police Checked. T: 01256 830777 W: www.wilkinschimneysweep.co.uk/basingstoke

CLEANING, OVEN CLEAN

CARAT CLEANING SERVICES Ltd. Reliable and Quality Service, High Standards. All domestic household chores. Ironing service, Carpet cleaning, etc. Fully insured. Call KAMILA on 07833445505 for a competitive price. Free quotes. (From £14 p.h.)

OVENCLEAN - Our service has helped us become the leading oven cleaning company in the UK. Let us rejuvenate any oven (including Agas), hob, extractor fan, microwave or barbecue with our non-caustic cleaning system to get things sparkling clean. Visit www.ovenclean.com for more information - for free no obligation quote call 01276 473118/07882 886736

CLOCKS MJW CLOCKS

Antique clock repairs, restoration & sales.
Free local Collection/delivery.
Contact Mike Webb. 01256 862492
07734 817741 www.mjwclocks.co.uk

COMPUTER SERVICES, TV repair (see also TV)

PC DOCTOR Do you have a sick computer?
Computers repaired and upgraded, hardware and software installed, connection to email and the internet. Photograph to CD service.
Contact Andy Pearce 01256 841204
email: pc.doctor@freeuk.com

HOME COMPUTER SUPPORT & TUITION

Friendly, Professional Support for PC & Apple.
Health Checks & Virus removal.
Maintenance & Upgrades. Broadband setup & Troubleshooting. Home Tuition for ALL abilities.
Visit www.myPChomehelp.co.uk
Call Richard Siers on Bentley (01420) 22844

I.M.C.S. Onsite PC/Laptop service & support. Virus / Spyware removal. TV, Audio, Video repair & service.
Digital switchover tuning. Contact Ian on 01256 701480. email - imcs@hotmail.co.uk

DENTISTS

ENVISAGE DENTAL.

Affordable dentistry, with clear results for the whole family. Gentle, reliable and highly qualified to care for all your dental needs. From routine to complex and nervous cases. Come and visit us in Basingstoke 01256 461888 and Alton 01420 84443
Love your dentist.
www.envisage-dental.co.uk

GUINEA COURT DENTAL SURGERY Professional, local, high quality dentistry for all the family delivered within a caring environment. Early morning, late evening and Saturday appointments available. Children seen on NHS. Implants, Orthodontics, Cosmetic dentistry and whitening. Denplan registered. Call: 01256 840141
www.guineacourtdental.co.uk

GWYNNE DENTAL. Quality private dentistry delivered by 3 highly experienced dentists. A family run surgery where all patients have the principals' number for out of hours care.
Contact: 01256 321945
jennifer@gwynnedental.co.uk
www.gwynnedental.co.uk

ODIHAM DENTAL take great care, pride and time on the dental services we offer. We have an experienced team who will be happy to help with all your dental needs. We offer flexible appointment times including weekends and evening. We also treat baby teeth on children for free with parents on our care plan.
www.odihamdental.co.uk 01256 636472

DRIVING LESSONS

SPRUCE SCHOOL OF MOTORING

Established local reliable Driving Instructor, Lessons from Home, Work or College, Pass Plus & Motorway Lessons,
Adrian Spruce, 01256 381306, 07976967059
www.spruceschoolofmotoring.com

SILVERLINE SCHOOL OF MOTORING

Local female driving instructor. Calm, patient and reliable. Flexible to fit around work and college commitments. Contact: nicki.lewis@hotmail.co.uk
01420 561877 or 07717 853658

ELECTRICAL, APPLIANCES

See also TV

BRIAN BANE & SON

Hoover & Hotpoint machines
Service and repairs
01252 844779

KEEN ELECTRICS Electrical Contractors.
Professional, Domestic and commercial Electrical Contractors. Fully qualified and registered.
Rochester House, 5 Aldershot Road,
Fleet, Hants GU51 3NG.
Tel 01252 614987. www.keenelectrics.co.uk.

ELECTRICIAN. For all your home electrical needs including fault-finding, repairs, new lights & sockets, outdoor electrics. Prompt replies, free quotes.
Steve Rae – 01256 703145 / 07852 655175
steve@lewisandrae.co.uk www.lewisandrae.co.uk
See customer reviews at Checkatrade.com

FARM SHOP NEWLYNS FARM SHOP, CAFÉ and COOKERY SCHOOL. Quality meat from our family farm. Traditional free-range chicken, pork, beef & lamb, eggs. Home-produced dry-cured bacon. Homemade pies, bread and cakes freshly baked on the premises. Lodge Farm, Hook Rd, North Warnborough, betwn N. Warnborough & Junc 5 M3.
01256 704128 www.newlyns-farmshop.co.uk

FUNERAL DIRECTORS & MEMORIALS

ALEXANDER & DRY

Funeral Directors and Memorial Consultants,
1 Seal Road, Basingstoke, Hampshire RG21 7NQ,
Telephone 01256 844663,
Serving the Community for over 90 Years,

SPENCER & PEYTON

Independent, family-run Funeral Directors &
Monumental Masons.
Pre-paid funeral plans.
London Rd, Hook, 01256 761717.
380 Worting Road, Basingstoke, 01256 323165
www.spencerandpeyton.co.uk

FURNITURE, JOINERY, DESIGN

See also under Tiles

CHIPANDELL JOINERY. Established 35 years.
Traditional local craftsmen. Purpose-made
joinery. Doors, windows, staircases. Kitchens &
bedrooms. Handmade furniture. Specialist bespoke
joinery using European hardwood. Herriard 01256
381 183 www.chipandell.co.uk

HUGO EGLESTON FURNITURE,

Furniture & woodwork designed & made to order.
Old Farm Yard, Lasham, GU 34 5RY, tel 01256
381368 www.eglestonfurniture.co.uk

F B DESIGN, CABINET MAKERS

Studies, Bookcases, Libraries and Home Offices.
Freestanding and Fitted Furniture.
Designed and made in Herriard Park
www.fbdesign.co.uk
01256 381855

STEPHEN BAILEY FINE FURNITURE. Designer
and maker of bespoke wooden furniture based in
South Warnborough. Phone (01256) 862606 or visit
www.stephenbailey.co.uk

FURNISHING FABRICS, BLINDS, CURTAINS, INTERIORS, SOFAS

ALTON BLINDS Vertical, Venetian, roller and
conservatory blinds. Patio awnings. Free measuring
and fitting. Call David Hall (from South
Warnborough) for a free quote. Phone 01256
862273 www.altonblinds.co.uk

continued

COVER UP DESIGNS offer a full range of interior
design services. We produce hand-made soft
furnishings in-house and offer a popular re-upholstery
service. Our studio has a wide selection of beautiful
up-to-the-minute fabrics, trimmings and wallpapers.
The Barn, Hannington Farm, Hannington RG26 5TZ
01635 297981 www.coverupdesigns.co.uk
info@coverupdesigns.co.uk

HONEYSUCKLE INTERIORS LTD Professionally
hand-made soft furnishings including curtains, blinds,
re-upholstery. All your interior design requirements.
Home and gift boutique. Huge library of fabric &
wallpaper. Alterations and fitting service plus lots of
friendly advice. Open Tues-Sat 10am to 4pm.
6 Rectory Road, Oakley, Basingstoke RG23 7LJ
01256 780831. www.honeysuckleinteriors.co.uk

SOFAS & STUFF. Sofas and beds, handmade in
Britain, in any fabric in the World. Affordable and with
a life-time guarantee. Visit our beautiful barn
showroom, free parking and a fresh cup of coffee at
The Walled Garden, Herriard Estate, RG25 2PL
01256 637240 www.sofasandstuff.com

FURNITURE RESTORATION

BEN NORRIS & CO Ltd Restorers of Antique
Furniture. We specialise in all aspects of furniture
restoration including French Polishing. Member of
BAFRA. Free estimates. Now in Basingstoke.
01256 333124 www.bennorrisandcoltd.co.uk
colin@bennorrisandco.co.uk

THE CABINET REPAIR SHOP

Antique restoration, French polishing, cabinet
making, marquetry and veneering.
Woodlands Farm, Blacknest, Alton,
Hants GU34 4QB 01420 23090
csembling@outlook.com

GARAGE SERVICES

KINGS MOTOR SERVICES

MOT Test centre. Servicing on all makes of cars.
Tyres. Air con. Diagnostics. Parking sensors.
South Warnborough 01256 862221
www.kings-motors.co.uk
enquiries@kings-motors.co.uk

GARDENS, LANDSCAPING, PONDS, FENCES

see also *Tree Work, Logs*

DAVE BALL GARDEN MAINTENANCE

Logs & kindling wood. Fencing.

01256 381631 07796417673

BEST KEPT GARDEN SERVICES Experienced local couple for year-round garden care, mowing, hedges, pruning & general maintenance. Contact Giles (Tunworth) 01256 353450, mob 07811 332282

CHESTNUT GARDENING. Friendly experienced professional gardener. For a free quote call Matt 07377 421252 or mail matt@chestnutgardening.com

EXPERIENCED GARDENER specialising in year-round care and maintenance. Hedge and rose renovation. Design and plant planning. Herbaceous borders. Fencing. Contact Jane on 07788613206

G & S PONDSCAPES

Specialising in the construction, cleaning and maintenance of ponds, waterfalls and rockeries.

Installation and advice for pumps and filtration.

All aspects of hard landscaping undertaken.

Call Gary or Sarah for a free no obligation quote:

01420 475060 or 07866 424798

SAUNDERS LANDSCAPE SERVICES

All general garden maintenance

Patios, walls, fencing

Hard and soft landscaping

Tel/fax 01256 520163, mob 07831 318097

J SMITH & SON

Regular and one-off visits.

Lawns, Hedges, turfing, patios, driveways, fencing, pergolas, brickwork, garden clearance, gutters, and much more. Please phone for a free quotation

01256 862860 or 07990 576440

Victoria@jsmithandson.com

www.jsmithandson.com

GARDEN MACHINERY SERVICE

MALCOLM STONEMAN REPAIRS

Garden Machinery. Sales, Service and Repair.

North Warnborough.

01256 701422. mob 07850 655138

continued

HART GARDEN MACHINERY

We sell, service and repair all garden

machinery, makes and models,

and offer an excellent service with a quick turnaround

Feel free to ask us about our tool sharpening service.

Hurst Farm RG27 8SL. 01252 844404

GARDEN URNS, STATUARY.

JARDINIQUE Specialists in unusual pieces for gardens large and small. Large selection of interesting items, including birdbaths, seats, staddle stones, urns, sundials and much more for your garden or in the home. For opening times see our website or phone 01420 560055

www.jardinique.co.uk Edward or Sarah Neish, Old Park Farm, Abbey Rd, Beech, Alton, GU34 4AP

HOLISTIC, BEAUTY, SKIN

A TOUCH OF BEAUTY- Located within "The Pod" 5, Grebe Close, Alton, GU34 2LR. All Beauty & Holistic Treatments, Waxing, Pedicure, Reflexology, Cranial. Call Tracy today-07944 331682!

HATS

HAMPSHIRE HATS. We have a stunning selection of hats for your special day.

Please ring 01256 702107 for an appointment.

HEALTH, PHYSIO, PILATES

PHYSIOTHERAPY Back and neck pain, headaches, sports injuries, ante/postnatal advice or posture improvement through physiotherapy, Clinical Pilates and DMS. Physiotherapy clinic in Upton Grey. Annabel Acheson-Gray, Grad Dip Phys Addenbrooke's, P-G Dip Manips, Cert Clinical Pilates and DMS. 07525140967 annabelsag@gmail.com

PILATES EXERCISE Hampshire's newest, fully equipped and completely dedicated private Pilates studio has now opened on the Herriard Estate with ex-London Royal Ballet soloist, Pippa Wylde. Private, studio and beginners classes now available. Herriard tel 01256 381122 or email pippa@pippawylde.com www.pippawylde.com

continued

Health, physio continued

SQUARE ONE PHYSIOTHERAPY CLINIC. Herriard.
Award-winning private practice offering
physiotherapy, manual therapy, sports massage
therapy, shockwave therapy and acupuncture, for
ALL ages including children and adolescents.
Affiliated with all private medical insurance
companies. 01256 541515 www.square-one.uk.com
info@square-one.uk.com

HELP

PHONE JOAN gives you back your spare time by
doing the jobs you don't like doing - searching for
reliable trades people, organising odd-jobs and
household projects, researching best buys and much
more. We also provide reliable cleaners & ironers for
regular or one-off spring cleans. Call Joan on 01252
612033 or visit our website at www.phonejoan.co.uk

LOCKSMITH

YOUR LOCAL LOCKSMITH. Members of UK
Locksmiths Assoc. Fully insured, CRB checked. Free
Quotes. No Call-Out Charge. A family run service for
all your locksmith needs. Our rates are very
competitive with no hidden charges. Fast Efficient
Professional & Friendly Service. 01256 464778 /
0755 7343 492 m-wallace@outlook.com
www.locksmithinbasingstoke.com

MARQUEES AND TENTS

JOHN M CARTER LTD
Established over 150 years
Hirers of Traditional and Frame Marquees
Makers of PVC and Canvas Covers
Calor Gas Dealer and Delivery
01256 324434
www.johnmcarterltd.co.uk

MOBILITY EQUIPMENT /DAILY LIVING AIDS

OUT & ABOUT - your local supplier of Stairlifts,
Riser-Recliners, Wheelchairs, Scooters and Daily
Living Aids. We also hire, service and repair your
equipment. Now part of the national Motability
scheme. Visit our showroom at 25 Southview Rise,
Alton or call 01420 549481. Free home assessments
by arrangement. www.outandabout-uk.com. We'll
help you find all you need to live life to the full!

NURSERY SCHOOL, CHILDMINDING

LITTLE CRICKETS NURSERY SCHOOL
in the Sports Pavilion at Herriard Green. Rated
'Outstanding' by Ofsted 2017. The school is for
children aged 2-5yrs and is run by a team of
experienced staff. We welcome visitors
so please call Nicky on 01256 384114, or visit our
website www.littlecricketsherriard.co.uk.

Alison Fontaine OFSTED Outstanding Registered
CHILDMINDER South Warnborough
Tel: 01256 862116 Mobile: 0771 227 0922
Email: AlisonFontaine303@gmail.com

PEST CONTROL

BROWNING PEST SERVICES LTD
Mammals, insects and birds. One-off treatments and
annual contracts. BPCA trained and insured
Most treatments guaranteed including rodents,
wasps, squirrels and moles
No Sun or bank holiday surcharges
01256 686238 Mobile: 07585 896229

PCS – For all your pest control needs. Wasps, bees,
hornets, mice, rats, moles, fleas, bed bugs,
cockroaches and much more! Fast reliable
professional service. Fully insured. Members of the
BPCA Same day service, no call out charge. Call
now on 01256 389124 or email pcs1@live.co.uk

PIANOS

BEN WHEELER PIANOS LTD
Piano sales: new and used. Piano tuning & repair,
piano removals, piano stools and accessories.
www.benwheelerpianos.co.uk 01256 477198

PLUMBING

S.R. HALL Ltd
Gas-Safe registered Plumbing & Heating Engineers
All aspects of plumbing works undertaken
01256 765535, email: srhallltd@btconnect.com

SAS PLUMBING AND HEATING LTD (Steve
Sullivan) All aspects of plumbing and heating
Specialising in design and installation of luxury
bathrooms. Power showers. Water softeners
Gas and oil heating systems. Boiler and cylinder
changes 01256 478920 or e-mail:
karen.sullivan@tiscali.co.uk

STEVEN LAWRENCE Plumbing Services Ltd
Installation, repair & maintenance of boilers, central

heating, radiators, taps, showers, toilets. Burst pipes & leaks, blockages. Gas Safe registered (179698).
Tel 01252 622349, mobile 07957 306 202
email: plumbing.services14@gmail.com

PRINTERS

PRINT DIRECTIONS

Complete design, print, web based services under one roof. Never Despair Studios, Unit 2, Alton Road South Warnborough, Hampshire, RG29 1RT
Tel: 01256 863000 Fax: 01256 863001
info@printdirections.co.uk www.printdirections.co.uk

PREMISES TO RENT

HERRIARD ESTATE Offices, workshops and stores available; occasional cottages and paddocks.
Herriard Estate Office: 01256 381275.
www.herriardpark.com

SUPPORT SERVICES FOR BUSINESS

If you require business support to include general and personal administrative tasks, business development, market research and surveys, please call Danielle 07886 448 349.

SECRETARIAL, SERVICED OFFICES

OLD BANK HOUSE, ODIHAM
For friendly and efficient Faxing
Copying, Binding, Word processing
Business address & serviced office accommodation
contact Old Bank House, 59 High Street, Odiham.
01256 704500, fax 01256 704717
email: fridaystreet@oldbankhouse.co.uk

SECURITY ALARMS

SECURITY SERVICES Your local SSAIB approved installer with over 20 years' experience in the alarm industry. All installations comply with current industry standards and can be either audible or monitored. Existing systems maintained based on site visit. We offer 24 hour cover & keyholding service. For info or free quote call Robert Jenkins 01252 844318 or 07721428782 www.securityserviceshants.co.uk

TILES PICCOLPASSO Handmade tiles & pottery
Caroline Egleston, Old Farm Yard
Lasham, nr Alton. 01256 381133
www.piccolpasso.com

TRANSPORT L.HUNT & SONS LTD

General haulage, workshop, warehouse, groupage, low loaders, HIABS,
Reynard House, Weston Road,
Upton Grey, RG25 2RJ
01256 862 702. Fax 01256 862190
www.huntsofbasingstoke.com

TREE WORK, LOGS

See also under Gardens

ALAN DUCE for logs
Phone 01256 862748 or 07508 056025

M&S TREES, Tree Care Specialists
Catering for all aspects of tree care.
01252 405669 mikeandsteve@mandstrees.co.uk
www.mandstrees.co.uk

TREE SURGERY, TPO and Conservation Area applications, hedge cutting, stump removal. BBSH (Warwick Hawes) 01256 381259. Mob 07990 804692

TV & SOUND REPAIRS, AERIAL & SATELLITE

HILLARY SERVICES Sound & Vision Repairs in your home to minimise delay & disruption. We service TVs, Hi-Fi systems, CCTV cameras & monitors, microwave ovens. We install Freesat HD, Also extra TV or phone points. Members of HCC Trading Standards 'Buy with Confidence' Scheme.
Tel 01489 891 991 mob 07971 590 526

HORIZON SOUND & VISION Aerial installation for Freeview. Freesat, European TV, Sky, Extra TV/sky points for magic eye & HD on multiple TVs. Phone & Ethernet points. TV wall installation. Free survey. System planning. Hidden cabling. Tuning & Smart TV Set up. Cable tidying. Weak/Low & Wifi Signal Improvement. CCTV Installations. Audio Systems including Sonos. Trading Standards approved.
01256 841860 www.horizonsatellites.co.uk

TUTORS

BASING TUTORS Local Tutors for Local People One-to-One Tuition. Friendly, personal approach, professional tutors. Full diagnostic assessment with no further obligation. Initial consultation free of charge. 01256 470948
email: admin@basingtutors.com
www.basingtutors.com
continued

Tutors continued

ENGLISH TUTOR available. If you have an 11-16 year old who is struggling with English or just needs an extra boost I would love to hear from you. I specialise in preparation for the English Language and English Literature GCSEs, but I can support any KS3 or KS4 student. Please call Emily Veall on 07722079448 emilyveall@yahoo.co.uk.

FRENCH TUITION is available in your area from a French native speaker. From grammar to conversation, all levels are catered for with learning tailored to the individual's needs. Lessons can be organised for groups or individuals in your own home. Call Nadia 01256 930129 - 07775 500382

WATER SOFTENING

AMS MAYFAIR. Fed up with scale in showers & kettles or the taste of your tap water? A family business based in Hook, we manufacture / supply affordable water softeners and water filters including the latest block salt versions. We also undertake water softener servicing and repairs, no call out charge. For more info call 01256 768171, mob 07836247694 or visit www.amswater.co.uk.

WEBSITES

WEB DIRECTIONS Websites for all budgets from £55.00 Never Despair Studios, Unit 2, Alton Road, South Warnborough, Hampshire RG29 1RT Tel 01256 863050 info@webdirections.co.uk www.webdirections.co.uk.

*Can you recommend a tradesman or local service?
If so, please contact Susie Vereker at
uptongreymagazine@gmail.com*

Xtra, Xtra!**UPTON GREY SHOP & PO**

need you! Use it or lose it.
Great variety of fresh goods, dry cleaning,
Laundry and other services.
Open late, open early. Sunday too.

Post Office 1.30 – 3.30 pm
Tues and Thurs

years. He is very highly regarded and makes the sessions fun for all. He also coaches at Odiham tennis club. The youngest children have the first session of 45 minutes, followed by several more groups.

The cost is £16 per child. We are able to keep this low due to the continued and much appreciated support from the Upton Grey Educational Trust.

In the event of bad weather the sessions will be cancelled. Please fill in the form enclosed last month and return to Susannah Livingston Booth, Redwing House, Upton Grey, RG25 2RD or email on: slivingstonbooth@gmail.com Tel: 01256 861419 / Mob: 07957 401174.

Payment by the 1st April by cash or cheque (made payable to Upton Grey Village Tennis Court) to Susannah Livingston Booth at Redwing House or by Bank Transfer to Upton Grey Village Tennis Court. Bank Details are: Sort Code 30-93-32, Account No: 02410908

We will also be holding a SUMMER JUNIOR TENNIS COACHING WEEK from Monday 5th–Friday 9th August

Tennis ‘Mix-in’ evening

The Upton Grey Tennis Committee is organising a fun Tennis ‘Mix-in’ evening on Tuesday 25th June. For ages 16 and over. Time: 6.45pm for 7.00pm. Meet at the Upton Grey Court, where partners will be drawn on the evening. All abilities welcome.

Upton Grey Parish Council needs Councillors

Are you Interested in becoming a councillor? Do you have the passion and drive to help your local community? Do you have a positive outlook and a can-do attitude? Are you willing to work as part of a team?

If so, put yourself forward and stand as a councillor. As a councillor representing your community you will help keep it a great place to live and work.

It is an important role and we actively encourage people from all walks of life to take an interest in local democracy and to think about putting themselves forward for election. For further information please contact Beverley Bridgman at clerk@uptongreyparishcouncil.co.uk or the Parish Council chairman Paul Gray at paulcgray@yahoo.com.

What do local councils do?

Your local council has an overall responsibility for the well-being of your local community. Their work falls into three main categories:

- Delivery of services
- Improve quality of life for residents
- Give communities a democratic voice

Becoming a local councillor

As a local councillor you can become a voice for your community and make a real change. Councillors are community leaders and represent the interests of the communities they serve.

Local councillors have three main responsibilities:

- Decision-making
- Monitoring
- Getting involved locally

Educational Grants available to ALL Upton Grey Residents

When the Upton Grey School was sold after its closure in the 1980s, half of the proceeds went to the village and the Upton Grey Educational Trust was formed. The income from the sale proceeds, invested by the charity, can be used twice yearly “for the advancement of education”.

The Trust meets in June and December each year to consider applications for assistance with educational needs, **from any age group and with no means testing**. Since the Trust was set up, it has awarded grants to over 90 applicants and 15 groups in addition to Long Sutton School.

For more information on how to apply and terms and conditions, please visit www.uptongreychurch.co.uk (under Groups & Organisations) or email debbie@debbie-bridle.com.

This is primarily open to residents of Upton Grey, but consideration may also be given to applicants from other parishes within the Benefice – funds permitting. Applications must be made by the person requiring assistance and **not** by a parent /guardian or other. We are very lucky to have this fund and very grateful to the late Ros Mills for establishing it.

Please submit your application in writing **before the end of May 2019** to:
The Secretary to the Trustees
UPTON GREY EDUCATIONAL TRUST
Clock Cottage

Cleves Lane, Upton Grey
 Basingstoke RG25 2RG
 or via email to: debbie@debbie-bridle.com (requesting a read receipt)

(**NOTE** that any late applications received after this deadline will automatically be carried over to the next meeting).

HERRIARD AND WINSLADE NEWS

www.herriard-pc.gov.uk

<https://www.facebook.com/herriardexservicesclub>

Join 'Herriard Village' group on <http://www.Facebook.com>

Herriard Ex-Services Club

Easter Bingo. Saturday 13th April from 6.30 pm with Eyes Down at 7pm. Filled rolls for sale at half time. Raffle and a meat draw. Further information please contact Jenny on 0780 123 8200.

Brick Kiln Cottage Bluebell /Wildlife Garden

The Avenue, Herriard RG25 2PR Open Sunday 12th May 12-4pm. £4.50 adult. Children free. Dogs welcome, on leads please (our cat and the peacock get very nervous) – More about this in Other News and Events section as this event is of wider interest to the other villages.

Herriard Spring Lecture 2019 In aid of St Mary's Church, Herriard Saturday 4th May 2019 7 for 7.30pm At Swallick Farmhouse, Winslade RG25 2NG

Our speaker this year will be Mrs Didy Grahame OBE, MVO. She was Secretary of the Victoria Cross and George Cross Association from 1970 – 2014. In that role she looked after all holders of these awards irrespective of where they might live. She would be involved in their lives and would provide help wherever necessary in sickness or in health. During her term of office she has known some 450 recipients of the Victoria Cross and George Cross. She has travelled extensively both in this country and abroad visiting award holders (and their families) who were no longer fit enough to attend the biennial reunions in London.

Whilst the detailed history of the awards is a matter of public record, Didy will be able to pick out a number of individuals, well known to her, and tell us about their background and personalities. There will be many anecdotes plus of course details of the selfless courage that these people

displayed with complete disregard to their own safety. It promises to be a fascinating evening.

Bring your own picnics. Tickets £20 per person from Peter Bedford 322408 or peter.bedford@clara.co.uk Tables of 8 or 10 but individual applications warmly welcomed. Limited to 70 people. Excellent raffle prizes.

Herriard Gardening Club - Gardening Jobs For April

- Plant up containers and hanging baskets.
- Sow carrots, lettuce, spinach, broad beans, cabbage and radish straight into the soil.
- Start off courgettes, runner beans, sweetcorn and outdoor tomatoes in the greenhouse.
- Cut the lawn with blades set high. Trimming the edges immediately neatens the whole garden.
- Ventilate the greenhouse, wash the glass and fittings.

Recipe of the Month - Ratatouille

2 tbsps sunflower or olive oil

2 large onions

2 cloves garlic

2 courgettes

2 peppers

1 aubergine

5 tomatoes

1 tbsp tomato puree

Garden herbs eg thyme, basil, sage, parsley - finely chopped

Squeeze of lemon juice

Prepare the vegetables and chop into 2.5 cm chunks. Crush the garlic. Heat the oil in a large pan

and cook the onions and garlic for 5 mins. Add the courgettes, peppers and aubergine and cook for 5 mins, then add the tomatoes, tomato puree, herbs. and lemon juice. Cover and simmer over a low heat for about 30 mins. Season to taste... If you are interested in joining our friendly club, whether new to gardening or an 'old hand' contact Gill 07766 732783

Herriard and Lasham with Bentworth Womens Institute

Our March meeting at Herriard and Lasham with Bentworth was at the. RBL Hall on 7th too late for the Villager. Our speaker was Tony Privett

from Hants Search and Rescue which was started in 2002. They search lowland areas of the country for missing persons, after being asked by the police. There are 126 volunteers, who are fully trained and come from all walks of life and are on call at all times. All counties that have a Search and Rescue will help with other areas if needed.

Most of the requests are for people with dementia or lost children.

Dementia patients are often only a few yards from a path or road

There is a dog group that can be used, they find victims by scenting the air.

Our next meeting is 4th April at 7.30pm. Bob Ives on his travels. We are opening the meeting to friends who would like to hear his talk. If you would like to come, please would you tell a WI member so we have some idea of numbers. Thank you

Helen Herring

Advance notice - Herriard Fete

Please make a note in your diaries that this year's fete will be on Sunday 2nd June at the Herriard Green. More details to follow, including contact details – should you wish to help out or have ideas for stall/games etc.

OTHER NEWS AND EVENTS

North Warnborough & District Garden Club

Our next meeting will be held on Thursday 25th April in the North Warnborough Village Hall at 2:10 PM for a 2:30 PM for start. We are pleased to be welcoming back one our very popular Speakers, Geoff Hawkins, who on this occasion will talk about "Pruning for a Range of Plants".

The competitions will be:

1. A Green Arrangement.
2. Three Specimen Tulips.
3. A Posy of Pansies/Violas.

Visitors are very welcome to join us. We are a friendly Club whose members share an enthusiasm for gardens and gardening. For further information, please telephone 01252 843848

Deane Sinfonia – new players needed

Do you play an orchestral instrument? Would you like to join a friendly non-auditioning amateur orchestra? The Deane Sinfonia is looking for new players, especially strings. Anyone of above Grade 5 standard is welcome to apply. So, if you learnt an instrument for many years, and have not had the opportunity to play it for a while, now's your chance. Or if you've recently taken one up, and have reached a sufficient standard, do join us. Our remit is to perform a concert each term, reaching out to schools and young people, to introduce them to a wide range of accessible classical music. We have spaces for a number of instruments, but strings are especially welcome.

We meet once a week at Queen Mary's College, Basingstoke, rehearsing from 7.30–9.30pm, with a break for tea, coffee and biscuits. Our concerts are usually towards the end of each school term. For more information visit www.deane-sinfonia.com and, if interested in joining us, either long-term, or for taster session, contact conductor, John Fuller, on johnfuller3@gmail.com or 398211.

Basingstoke Choral Society – Mozart Requiem

Basingstoke Choral Society will be performing at the Anvil on Saturday 6th April, at 7.45pm. The concert comprises the Mozart Requiem, and Janet Wheeler's *I Sing and Never Shall*.

Mozart's magnificent *Requiem* is a work shrouded in mystery. Beset by ill-health in the summer of 1791, Mozart was visited by a 'mysterious man in grey' who commissioned this work on condition of the utmost secrecy. This person, we now know, was employed by Count von Wazlegg-Stuppach, a keen amateur musician, whose wife had died earlier that year. The Count's intention was to pass the work off as his own and dedicate it to his wife, hence the need for secrecy. Unfortunately, when Mozart died in December that year the work was incomplete. It was finished by Franz Süssmayr and even though only part of it is Mozart's work, it remains one of the most loved choral works in the repertoire, full of beautiful and uplifting melodies and harmonies, so typical of Mozart.

The concert also features *I Sing and Ever Shall*, an exciting choral work by the award-winning British composer Janet Wheeler. First performed in 2016, it was commissioned by our own Musical Director, David Gibson and another of his choirs, Southampton Philharmonic Choir. This work is

a powerful exploration of the many aspects of singing – from the link between breath and air, words and song and the all-encompassing joy of producing music in this way. Featuring a cantata and a dance-style movement, the piece builds to a climactic concluding statement. This promises to be an exciting concert so please come and enjoy a brand new composition together with a work of genius from the established choral repertoire.

Tickets: The Anvil Box Office: 01256 844244 or anvilarts.org.uk

Prices: £27, £21, £16, £12. Students + under 16's £7 (All prices includes £2 Booking Fee)

Film Nights at the Village Hall (Ridley Hall), South Warnborough

Our regular film night is the 3rd Wednesday of the month. The bar opens at 7.00pm and the film starts at 7.30pm. Ice creams are on sale during the interval. Tickets £5.00 can be purchased in advance at the Village Shop or on the door at the start of the evening.

The films for April is *The Wife* starring: Glen Close and Jonathan Pryce...After nearly forty years of marriage, Joan and Joe Castleman (Glenn Close and Jonathan Pryce) are complements. Where Joe is casual, Joan is elegant. Where Joe is vain, Joan is self-effacing. And where Joe enjoys his very public role as Great American Novelist, Joan pours her considerable intellect, grace, charm, and diplomacy into the private role of Great Man's Wife.

The Wife interweaves the story of the couple's youthful passion and ambition with a portrait of a marriage, thirty-plus years later - a lifetime's shared compromises, secrets, betrayals, and mutual love.

Please do join us for this regular and enjoyable social event.

Veronica Cannan

Brick Kiln Cottage Bluebell /Wildlife Garden

The Avenue, Herriard RG25 2PR Open Sunday 12th May 12-4pm. £4.50 adult. Children free. Dogs welcome, on leads please (our cat and the peacock get very nervous)

We are opening the garden again this year for the National Garden Trust. All proceeds go to the NGS charitable funding to Macmillan Cancer Support, Marie Curie, Queen's Nursing Institute, Hospice UK, Carer's Trust, Parkinson's UK, and Perennial, and just appointed is Mind as a new guest charity. In addition donations go to two children's charities, Treloar's and Kids. Also, to help encourage people into a career in gardening and horticulture the NGS continue to fund projects and training schemes with the Professional Gardener's Trust, WRAGGS, Royal Botanical Garden of Wales and ABF Soldier's Charity as well as local community gardening projects with Elspeth Thompson Bursaries which are administered in partnership with the Royal Horticultural Society.

Over the last 10 years £27,000,000 has been donated from our garden open days country-wide. All are very welcome to come for sandwiches, cake, homemade lemonade, and endless tea

The National Garden Scheme

Hampshire National Garden Scheme is off to a fantastic start for 2019. We had record numbers of visitors to our Snowdrop gardens, so we just hope the weather is kind and we can keep up the momentum for the rest of the season. This scheme was founded in 1927, to fund the work of district nurses. Over 90 years on, our volunteers continue to raise money for a group of nursing & caring charities, including Macmillan Cancer Support, Marie Curie, Parkinson's UK and Queen's Nursing Institute

See all of our Beneficiaries at <https://www.ngs.org.uk/beneficiaries>.

There are several amazing **Gardens Open over the Easter Weekend** - these mentioned are all within 25 miles of Upton Grey.

Crawley Gardens, SO21 2PR. (3 individual gardens open)

Crawley is an exceptionally pretty period village in its own right. The spring gardens are Bay Tree House, Little Court and Paige Cottage;

Open: 19th, 22nd April 2 to 5.30. Combined Admission £7.50 children free. Refreshments available: <https://www.ngs.org.uk/find-a-garden/garden/17567>

Beechenwood Farm, Odiham, Hook

<https://www.ngs.org.uk/find-a-garden/garden/8569>

2-acre garden in many parts, including woodland, fritillary and cowslip meadow, walled herb garden, rock garden and shady walks leading to 8-acre copse of native species with grassed rides.

Open: 2.00–5.00pm every Wednesday till 5th June, Admission: £4.00 (children free), Refreshment: Home-made teas.

This garden will also be open Bank Holiday Monday 6th May.

Old Thatch & Millenium Barn, Winchfield, Hook

<https://www.ngs.org.uk/find-a-garden/garden/20927>

A chocolate box thatched cottage, featured on film and TV, with a succession of spring bulbs, wild flowers, perennials and homegrown annuals pollinated by our own bees and fertilised by the donkeys, who await your visit.

Open: 7th April, 2.00–6.00pm (also open June & September). Admission: £4.00 (children free, Refreshments: Home-made teas.

Open by arrangement only

You can get ahead of the game with these two gardens which open for May, July and August. Just contact the garden owners.

Little Croft, Fleet (a new garden for 2019)

<https://www.ngs.org.uk/find-a-garden/garden35917>

A garden inspired by Japanese garden design principles, with pond and stream garden, a tea garden with stepping stone path-way leading to an arbour and a dry-stone garden.

Open: Whole of May, Admission: £4.00 (children free), Refreshment: on request, Group Size: 10 to 30

Whispers, Dogmersfield, Hook

<https://www.ngs.org.uk/find-a-garden/garden/18789>

A 2-acre garden of manicured lawns surrounded by large borders of colourful shrubs, trees and long flowering perennials. Wild flower area, kitchen garden and living sculptures. Spectacular waterfall cascades over large rock slabs and magically disappears below the terrace.

Open: July and August, Admission: £6.00 (children free), Group size: 20+
And finally...If you are looking for somewhere to go over the Easter break, we can cater for that too:

Open days at Alton Abbey (GU34 4AP)

These will be held on Saturday 27th April and Sunday 28th April, from 12.00noon–5.00pm. Admission £3.00 Tea and Cake £3.00, Mosaic demonstration, beautiful stationery, second-hand books, Hadeel Palestinian Fair-Trade products for sale. Organ/Piano Recitals 3.00pm. both days. Friends of Alton Abbey Registered Charity No 284876

North Hampshire Downs Mothers' Union

Our meeting on Tuesday April 16th will be somewhat different to our usual meetings, as we have been invited to join members of the congregation in St John's Church, Hook for their Seder meal. This is the traditional Jewish meal held at the beginning of the Passover Festival, and was the meal that Jesus and his disciples shared before Jesus' trial and crucifixion. As well as sharing a range of symbolic foods, the evening will include a retelling of the story of the flight of the Israelites from Pharaoh and the Egyptians. It will be wonderful preparation for us in Holy Week as we prepare for Good Friday and Easter Sunday. If you want to find out more about our branch or the Mothers' Union more generally, please contact our Branch Leader, Sue Murphy on 01252 845011.

Lecture by Dame Margaret Hodge - 8th May in aid of Cardiac Rehab

Having cancelled the Lecture in November due to illness, Dame Margaret Hodge has kindly agreed to attend The Alton Maltings on Wednesday 8th May. As usual wine and canapes will be included in your ticket price.

Swing into Spring Ball at The Alton Maltings Saturday 18th May in aid of Cardiac Rehab.

Dust off your dinner suits and ball gowns and come along to the Alton Maltings for some great food, live music and entertainment. Reserve a table asap! Email: hearty@cardiac-rehab.co.uk 01420 544794

SMALL ADS

Friendly reliable **Carer available** for work, 10 years' experience in all different aspects of care. Cleaning and ironing included. I am passionate about making a difference to people's lives. Valid DBS check and relevant insurance. Contact Charlotte Knight to find out more, call 07464 973267.

Live-in Carer Wanted We are looking for an experienced carer for our parents 90/91. (DBS, training and references required) Initially a temporary live-in position, starting April for 6-8 weeks, & further work throughout the year. Our current carer will provide respite support. For details, please call Nicky at 01256-862630 or email njbart@rogers.com

Artist's Studio wanted. Near Weston Patrick. Vivian.07809141355. Or vikings@mayrop.com.

HALLS FOR HIRE

Upton Grey Village Hall for hire from £7.00 per hour. Functions, meetings, parties, private and commercial. Full kitchen facilities, central heating and sound system, chairs, tables, crockery and cutlery available. Contact Elaine Lewington on 01256 862894.

The Royal British Legion Hall, Herriard Available for hire: wedding receptions, functions, parties, meetings, and events. Fully licensed bar, full kitchen facilities, garden, tables and chairs, sound system, disabled access, central heating, pool table and darts. Key holder 01256 381403 or email hall bookings to herriardrbllhall@aol.com

CHURCH SERVICES (please also see the weekday services under “Regular Events”)**7 April – The 5th Sunday of Lent**

| | | |
|----------------------------|---------|----------------|
| Holy Communion (1662 said) | 9:00am | Tunworth |
| Family Service (sung) | 9:45am | Herriard |
| Family Communion (sung) | 10:00am | Upton Grey |
| Holy Communion (1662 said) | 11:15am | Weston Patrick |

14 April – Palm Sunday

| | | |
|--|---------|----------------|
| Holy Communion (1662 said) | 9:00am | Herriard |
| Family Service, sung (meet at pond 9.55am) | 10:00am | Upton Grey |
| Parish Communion (CW sung) | 11:15am | Weston Patrick |
| Evensong (sung) | 6:00pm | Tunworth |

18 April – Maundy Thursday

| | | |
|-------------------------|--------|--------|
| Benefice Holy Communion | 7:30pm | Odiham |
|-------------------------|--------|--------|

19 April – Good Friday

| | | |
|-----------------------------------|---------|------------|
| Good Friday meditation (sung) | 8:00am | Tunworth |
| Good Friday Workshop | 9:30am | Upton Grey |
| Good Friday Meditation (sung) | 10:00am | Herriard |
| Good Friday Family service (sung) | 11:00am | Upton Grey |

21 April – Easter day

| | | |
|--------------------------------|---------|----------------|
| Parish Communion (CW sung) | 9:00am | Tunworth |
| Easter Family Communion (sung) | 9:45am | Herriard |
| Easter Family Communion (sung) | 10:00am | Upton Grey |
| Holy Communion (CW sung) | 11:15am | Weston Patrick |

28 April – The 2nd Sunday of Easter

| | | |
|-------------------------|---------|----------------|
| Family Service (sung) | 9:00 am | Tunworth |
| Family Communion (sung) | 9:45 am | Herriard |
| Informal Service | 10:00am | Upton Grey |
| Tea-time service | 4:30pm | Upton Grey |
| Evensong (sung) | 6:00pm | Weston Patrick |

5 May – The 3rd Sunday of Easter

| | | |
|----------------------------|---------|----------------|
| Holy Communion (1662 said) | 9:00am | Tunworth |
| Family Service (sung) | 9:45am | Herriard |
| Family Communion (sung) | 10:00am | Upton Grey |
| Holy Communion (1662 said) | 11:15am | Weston Patrick |

12 May – The 4th Sunday of Easter

| | | |
|----------------------------|---------|----------------|
| Holy Communion (1662 said) | 9:00am | Herriard |
| Parish Communion (CW sung) | 10:00am | Upton Grey |
| Parish Communion (CW sung) | 11:15am | Weston Patrick |
| Evensong (sung) | 6:00pm | Tunworth |

19 May – The 5th Sunday of Easter

| | | |
|----------------------------|---------|------------|
| Holy Communion (1662 said) | 8:00am | Upton Grey |
| Parish Communion (CW sung) | 9:00am | Tunworth |
| Matins (sung) | 9:45am | Herriard |
| Family Service (sung) | 10:00am | Upton Grey |

26 May – The 6th Sunday of Easter / Rogation day

| | | |
|------------------------|---------|----------------|
| Rogation Village walk* | 10:00am | Tunworth |
| Rogation Village walk* | 10:00am | Upton Grey |
| Rogation Village walk* | 10:00am | Weston Patrick |
| Rogation Village walk* | 11:00am | Herriard |
| Tea-time service | 4:30pm | Upton Grey |

**Rogation village walks – meet outside each church at the time indicated.*

30 May – Ascension Day

| | | |
|-------------------------|--------|-----------|
| Benefice Holy Communion | 7:30pm | Up Nately |
|-------------------------|--------|-----------|

DATES FOR YOUR DIARY – March 2019

This Month

| | | | |
|-----------------|-----|---|-----------|
| 4th Apr | Thu | Lent Lunch, Waverley Cottage, Church St, Upton Grey | 12.30pm |
| 6th Apr | Sat | Spring Flower Show, Upton Grey Village Hall | 2.00pm |
| 6th Apr | Sat | Basingstoke Choral Society concert, Anvil, Basingstoke | 7.45pm |
| 13th Apr | Sat | Easter Bingo, Herriard Ex- Services Club | 6.30pm |
| 15th–18th Apr | | Junior Tennis Coaching, Upton Grey | 9.00am |
| 17th Apr | Wed | <i>The Wife</i> South Warnborough film night, Ridley Hall | 7.30pm |
| 25th Apr | Thu | Cardiac Rehab Charity Bridge Tea, Beech Village Hall | 2.00pm |
| 27th & 28th Apr | | Alton Abbey open days, Alton Abbey, Beech | 12.00noon |

Advance Dates

| | | | |
|-----------|------|---|--------------|
| 4th May | Sat | Herriard Spring Lecture Swallick Farmhouse, RG25 2NG | 7 for 7.30pm |
| 8th May | Wed | Cardiac Rehab Charity Lecture: Dame Margaret Hodge | 7 for 8.00pm |
| 18th May | Sat | Cardiac Rehab Swing into Summer Ball, The Maltings, Alton | |
| 2nd June | Sun | Herriard Fete, Herriard Green, Herriard | |
| 11th June | Tues | Upton Grey Golf Day, Tylney Park Golf Club | 8.30am |
| 25th June | Tues | Tennis 'Mix-in' evening, Upton Grey Tennis Court | 6.45pm |
| 10th Aug | Sat | Summer Show, Church Meadow, Upton Grey | 1.00pm |
| 10th Aug | Sat | Summer Disco Dinner Party, Church Meadow, Upton Grey | 7.30pm |
| 12th Oct | Sat | Harvest Supper, Upton Grey Village Hall | |
| 26th Oct | Sat | Uptongreyaautumnfestival.co.uk | |

Regular Events

| | | | |
|---------------|--|--|---------|
| Each Mon | | Yoga, RBLH, Herriard | 12 noon |
| Each Mon | | Prayer Group, 4 Little Hoddington | 9.45am |
| Each Wed | | Upton Grey Toddler Group | 10.00am |
| Each Wed | | Dementia Support plus carers, Sunflower Café, Odiham | 2.00pm |
| 1st Thu | | Herriard WI | 7.30pm |
| 1st Thu | | Tunworth Coffee morning, Tunworth Church, | 10.30am |
| 1st Tue | | Adult Choir Practice, Upton Grey Church | 8.00pm |
| 2nd Sun | | Sparks Sunday Club, Village Hall, Upton Grey | 9.50am |
| 2nd & 4th Mon | | Upton Grey Bridge Club at The Hodd | 7.30pm |
| 3rd Wed | | Film Night Ridley Hall South Warnborough | |
| 7.00pm | | | |
| 3rd Thu | | Holy Communion, Herriard Church | 10.00am |
| 4th Thu | | Coffee Morning, Weston Patrick Village Hall | 10.30am |

Copy deadline: The deadline for all material is 15th April for the May issue.

Email: uptongreymagazine@gmail.com

Please delete any other email address your computer may remember...

Next month's editor is Sheila Stranks.

UPTON GREY VILLAGE SHOP and POST OFFICE

Tel: 01256 862326 (Shop), 01256 861454 (Post Office)

shopuptongrey@btconnect.com

"Serving the Community"

"Supported by all who care for Village Life"



THE VILLAGE SHOP

OPENING TIMES

Monday - Friday: 7am - 7pm

Saturday: 7am - 6pm

Sunday: 8am - 1pm

RANGE OF GOODS

Special range of Cheeses
Fresh Bread & Vegetables daily
Fresh Meat & Fish to order
Range of Wine & Spirits
Home Cooked Food
and Delicatessen
Dry Cleaning & Shoe Repairs
Newspapers
Home Delivery Service

THE POST OFFICE

OPENING TIMES

Tuesday: 1.30pm - 3.30pm

Thursday: 1.30pm - 3.30pm

SPECIAL SERVICES

Personal Banking
Pre-order Foreign Currency
Travel Insurance
Pensions and Benefits Payments
Special Deliveries
Home, Car and Pet Insurance
Savings Products
Telephone Bill Payments